

CLASSIC TRAWLERS



Standard Specifications – Classic 45

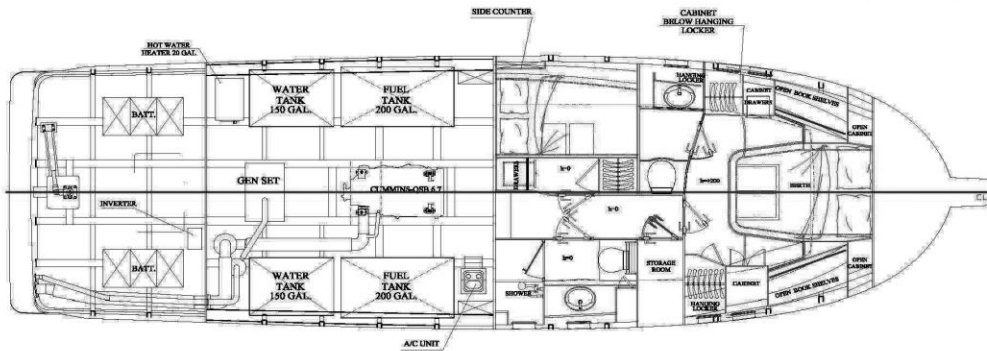
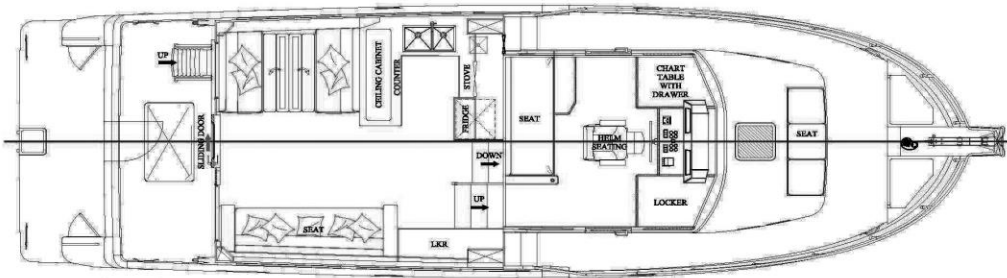
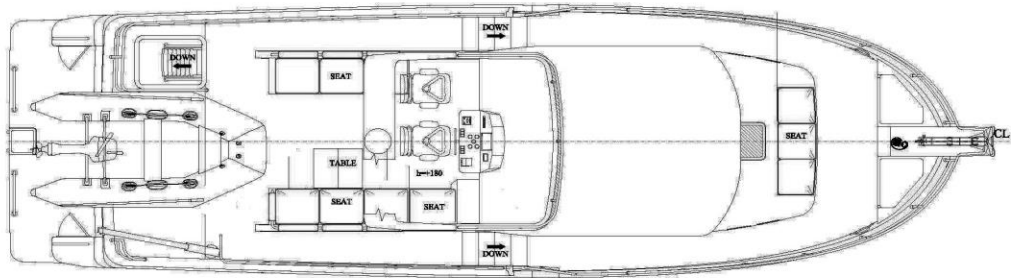
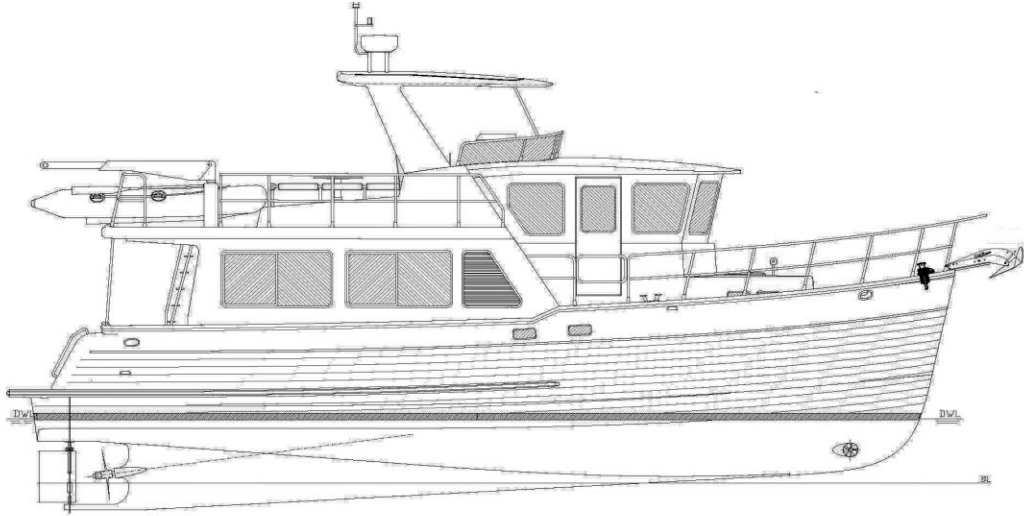
General

Length overall	13.98 m
Beam	4.17 m
Draft	1.4 m
Displacement dry/loaded.....	15500/17800 kg
Fuel capacity	1500 L
Water capacity	1100 L
Propulsion	Cummins QSB 6.7 305 hp
Construction	solid fiberglass hull, vinyl ester outer layers
Sleeping accommodation	Up to 9 people inside

Systems

All mechanical and electrical systems from major international suppliers, including Cummins engines, Onan generator, Maxwell winches, Vetus Maxwell thrusters, Cruisair AC/heat, BEP electrical systems, Hella LED lighting, Fusion entertainment, Garmin instrumentation, Whale pumps, Racor filters, Mastervolt chargers, Ultraleather upholstery, etc

Specifications may change without notice or liability, however every effort will be made to match the quality specified.



Specifications may change without notice or liability, however every effort will be made to match the quality specified.

www.classictrawlers.co.nz

Construction

- Solid hand-laid fiberglass hull – avoids the problems of cored hulls.
- For osmosis prevention, outer two layers below the waterline are vinyl ester resin, and International Paints epoxy barrier coat applied before anti-fouling
- International paints Micron Extra antifouling
- Decks and superstructure are cored with synthetic honeycomb material
- Bilges painted white throughout
- Fully integrated swim/fishing platform
- Type 316 polished stainless steel window frames and gray tint tempered safety glass – no more corroded aluminium frames
- Heavy duty 32mm #316L stainless steel railings and stanchions securely bolted to aluminium backing plates
- Stainless steel mooring cleats (8) - 2 in cockpit, 2 midship, 2 at the bow +1 on each side of salon. Optional cleats on swim platform (2) and in cockpit (2)
- Stainless steel fuel, water and waste tank deck fittings
- Stainless steel opening portholes with screens
- Continuous stainless steel rubrail
- Aluminium floor framing to prevent warping
- Chrome/stainless light fixtures, hinges, handles, push buttons
- Teak and holly flooring throughout
- Satin finished teak paneling and cabinetry
- Bottom of doors louvered for good flow through ventilation
- Steam bent laminated trim on top of cabinets
- Book matched drawers and cabinets
- Traditional quality dovetailed drawers with full extension slides
- Standard curtains throughout - optional wood venetian blinds
- Screens on all sliding windows and portholes, and Oceanair blind on main hatch
- Soft cream coloured removable vinyl headliners
- Ultraleather fabric for interior cushions, choice of colour

Mechanical Systems

- 305hp Cummins QSB 6.7 common rail diesel engine with 160 amp alternator, ZF85A transmission, Viewmaster gauge at main helm. Optional 355hp.
- Access to engine room from forward stairs that lift up, and hinged floor hatches
- Superior engine sound proofing with perforated liner panels
- Cummins electronic throttle and shift controls
- Bronze sea cock and strainer on cooling water intakes

Specifications may change without notice or liability, however every effort will be made to match the quality specified.

www.classictrawlers.co.nz

- Water lift muffler and 152mm exhaust
- 50mm Aqualoy 17 stainless steel propeller shaft with dripless shaft seal
- 12 volt DC engine room blower and stainless steel air intake louvres
- Precision 4 blade propeller
- Ultraflex 2 station hydraulic steering
- Aluminium non-skid plate floors in engine room and lazarette
- Hella LED engine room lights (4)
- Optional Reverso oil change system for engine and generator
- Vetus Maxwell BOW9512D, 12 volt bow thruster
- Optional Vetus Maxwell BOW9512D, 12 volt stern thruster with shrouds
- Optional Seafire FD400 MA manual/automatic fire suppression
- Dual Racor 900 fuel filters standard for main engine. Single filter for generator.
- Automatic bilge pumps (3) - Rule or comparable brand
- Manual bilge pump (1)
- Shurflo fresh water pump with accumulator tank
- Whale Seaward S1250, 42 litre water heater with 1500W/230V element and engine heat exchanger. Optional larger 75L heater.
- Fiberglass fuel tanks - 2 X 750 litres
- Fiberglass water tanks - 2 X 550 litres
- Holding tank 260 litre w/ Whale diaphragm macerator and pump out and Trident Premium sanitation hose
- Uponor hot and cold domestic piping

Electrical Systems

- Optional Onan 7kW, 230 volt, 50 Hz genset w/ sound shield and water lock muffler
- Optional Mastervolt Combimaster 3000w inverter/charger (pure sine wave) replaces standard Victron 50A battery charger
- 12v/200AMP Whisperpower AGM batteries in battery box (2 house batteries, 1(+1) thruster/windlass batteries, 1 engine starter, 1 generator starter)
- BEP master control panel, AC/DC, with RCDs and circuit breakers
- Bonded electrical system with tinned and colour coded wiring
- 230V AC outlets
- 32 amp 230V stern shore power connection, optional second connection at bow with galvanic isolator
- Hella LED interior lighting and navigation lights

Specifications may change without notice or liability, however every effort will be made to match the quality specified.

www.classictrawlers.co.nz

- Hella white or blue LED courtesy lights, cockpit, swim platform, stairs, foredeck and flybridge
- Optional under cabinet and valence LED strip lighting
- NZ certified switches and outlets

Electronics

Optional suggested Garmin electronics including two 12" multifunction screens in the pilothouse and one on the flybridge, 18" radar, fish finder with CHIRP transducer, autopilot, AIS receiver and VHF's, rear view camera. Alternate configurations and brands available to suit client

Salon, Dinette and Galley

- Locking aluminium sliding door from cockpit with teak liner
- L-shaped settee starboard side, that pulls out into a berth, or straight sofa. Dinette on port side with hi-low folding table that makes into a bed
- Many optional layouts available for this space, or customize you own
- Ultraleather® upholstery
- Optional 40" pop up TV in port side cabinet, or 28" drop down from ceiling
- Quartz stone countertops with double SS sink and pullout faucet
- Force 10 propane stove w/ oven
- Optional electric stove w/oven
- Exhaust fan beside the stove - vented outside
- Standard Novacool RFU9000, 250L AC/DC fridge/freezer. Optional domestic 336 litre full size domestic fridge/freezer w/ stainless doors (needs inverter)
- Teak storage cabinet on top of refrigerator and above stove
- Optional microwave
- 6 drawers and 3 cabinets in lower galley. Optional lazy susan in corner cupboard
- Optional ceiling cabinet in the galley w/frosted glass doors and optional wine glass holders
- Lifting hatch for storage on galley countertop
- One overhead hand rail on ceiling of salon
- A/C outlets, (5), USB outlets, reading lights (2)
- Optional Fusion entertainment unit in starboard cabinet, Bluetooth and Airplay enabled, networked to navigation system – 4 zones: Salon, cockpit, pilothouse and flybridge

Specifications may change without notice or liability, however every effort will be made to match the quality specified.

www.classictrawlers.co.nz

Pilothouse

- Locking sliding doors each side with teak lining
- AC & DC electrical panels – BEP/Blue Seas with digital displays
- Helm seat with 4" polished aluminium pedestal
- Cummins single lever electronic controls
- Engine gauges including fuel flow on Cummins Vessel View display
- Thruster control(s)
- Fuel and water gauges
- Maxwell windlass control with optional chain counter
- Ritchie compass
- Dual horn control
- Map lights on either side of helm
- Teak and stainless steel steering wheel
- Optional defrost fans
- 3 x Roca windshield wipers with washer system standard
- A/C outlet (2), DC outlet (1), USB outlet, (2)
- Bench seating with Ultraleather upholstery – optional pull-out into single bunk
- Optional folding table port side of bench seat
- Storage cabinet and drawer
- Reading lights above bench seat
- Aft window, opening, screened
- Optional black vinyl on dashboard
- Drawer on starboard side of helm. Optional drawer on port side.

Main Head

- Teak head with teak and holly floors and mirrored ceiling
- Tecma Silence Plus electric toilet with fresh and optional salt water flush
- Quartz stone countertop with white ceramic undermount sink
- Mirror over vanity
- Fibreglass shower stall - with exhaust fan and quality hardware
- Optional mosaic tile inlay in shower
- Frosted glass shower door with Classic logo
- Opening portholes with screens
- Holding tank level gauge with external sensors
- A/C outlet
- Towel racks and bathroom hardware
- Whale gray water diaphragm pump for shower drain

Specifications may change without notice or liability, however every effort will be made to match the quality specified.

www.classictrawlers.co.nz

Master Stateroom

- Queen Island bed with gas struts to storage below, 125mm mattress
- Optional white vinyl headboard with mirror above
- 2 x reading lights
- 4 x drawers under bed
- Opening and screened porthole windows
- Opening overhead hatch with optional Oceanair screen and blind
- Hanging lockers with automatic lighting, various lockers and drawers, all customizable to your needs.
- 2 x 230V outlets with USB
- Optional ensuite head with quartz stone counter and Tecma electric toilet

Guest Stateroom

- Standard lower double bed with 125mm mattress, and optional single overhead bunk with 100mm mattress – sleeps 3. Drawers under main bed.
- This space can be configured in many different ways including an office, laundry, convertible sitting area, etc
- Plentiful hanging lockers, drawers, etc, depending on your layout
- A/C and USB outlet
- 2 x opening portholes
- Optional mirror on cupboard door

Storage Room

- This area is in the hallway outside the main stateroom, and can be customized to suite an individual client. It can accommodate a washer/dryer, freezer, drawers, fishing rods, or just be used for storage. It comes standard with shelves

Cockpit and swim platform

- Transom door to swim platform
- Optional gates on port and starboard side of cockpit
- Locking aluminum sliding door for entry to salon
- Optional stainless steel sliding and barn doors to salon
- Optional cockpit seating
- Locker on transom with fresh/sea water washdown outlet
- Locker on transom with shore power connector
- Gas assisted hatch to access lazarette

Specifications may change without notice or liability, however every effort will be made to match the quality specified.

www.classictrawlers.co.nz

- Battery storage, inverter, battery controls in lazarette, space for water maker
- Emergency tiller in lazarette
- Optional stainless steel ladder leading to fly bridge
- Fresh water shower on inside of transom
- Stainless steel fold-away swim ladder
- SS aft upper deck supports
- Hella LED overhead lighting (2) and blue LED courtesy lighting
- Optional Fusion speakers
- Optional stainless steel railings on swim platform, baitboards, BBQs , etc
- Optional Flexiteak[®] or real teak deck on swim platform and cockpit floor

Flybridge

- Vinyl covered helm seat. Optional second or double seat available.
- Generous raised dash for all your navigation instruments and controls
- Cummins engine gauges and single lever electronic controls
- Windlass control
- Thruster control(s)
- Optional second Ritchie compass
- Electric horn with control on dash
- 12 volt DC switches and outlet
- Stainless steel steering wheel
- Standard hardtop with 4 Hella LED lights
- Space for tender either fore and aft or crossways, depending on size
- Hella blue LED courtesy lights
- Hella NaviLED anchor and navigation lights
- Stainless steel flag base
- Space for propane bottle beside helm on starboard side
- Bench seating either side with storage under, and Sunbrella[®] cushions
- Optional manual or electric davits
- Flybridge drains piped down to waterline
- Optional canvas covers for raised dash, helm seat and side seats
- Optional Marinco spotlight on pilothouse roof with dual station remote
- Optional Fusion speakers

Foredeck

- Maxwell RC10-10 windlass with stainless foot switches
- Maxwell Maxset 30kg polished stainless steel anchor on Maxwell roller fitting

Specifications may change without notice or liability, however every effort will be made to match the quality specified.

www.classictrawlers.co.nz

- 80m of high test Italian G4 10mm galvanized chain and 70m 8-braid 16mm nylon
- Chain locker divided in half – great for extra anchor, fender storage, etc
- Fresh & sea water washdown hose connector in anchor locker
- Gates in railing on each side
- 3 x Hella blue LED courtesy lights



Classic Trawlers Ltd

PO Box 25758,

St.Heliers,

Auckland 1740, New Zealand

classictrawlers@gmail.com

Ph 0211600379

Specifications may change without notice or liability, however every effort will be made to match the quality specified.

www.classictrawlers.co.nz